



Cheetah CMOS Camera Software Installation Quick Start for GigE Vision® w/PoE and 10 GigE Vision Pregius

This Quick Start guide provides software installation steps for the Cheetah Pregius camera with the following interfaces: GigE Vision® w/PoE (POE), 10 GigE Vision w/PoE (10G), and 10 GigE Vision over fiber (SFP+).

For configuring Cheetah CoaXPress camera, use a GenICam™ compliant programming interface provided by your frame grabber.

The USB flash drive included with your camera contains GenICam™ compliant Imperx Camera SDK software that includes the SDK and IpxPlayer application and is compatible with the following operating systems:

- Windows 7, 32-bit and 64-bit,
- Windows 8, 32-bit and 64-bit,
- Windows 10, 32-bit and 64-bit,
- Ubuntu Linux 16.04 64-bit.

IMPORTANT: If an older version of the configuration software is on your computer, you must remove it before completing the installation. The installation wizard will do this for you during the installation process. Or, you can uninstall a previous version yourself.

1. To remove previous versions yourself:

- 1.1. Open **Control Panel** on your computer.
- 1.2. Select **Programs and Features**.
- 1.3. Select the software from the list and click **Uninstall**.

2. Before Installing the Configuration Software:

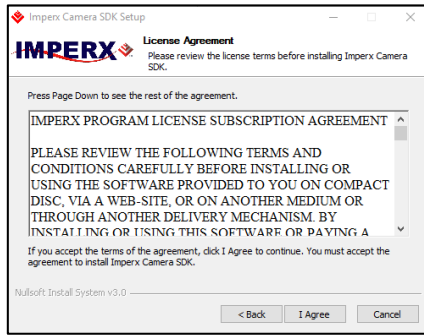
- 2.1. Insert the USB flash drive in your computer.
- 2.2. Open **File Explorer** and locate the flash drive.
- 2.3. Double click the **Flash drive**.
- 2.4. Click and drag the **IpxCameraSdk***.exe** file to your desktop.

3. Installing the Software:

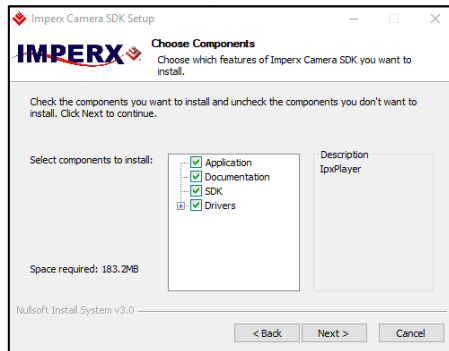
- 3.1. Double click the **IpxCameraSdk***.exe** on your desktop. The Welcome Setup screen opens. Note the recommendation to close other applications and then click **Next**.



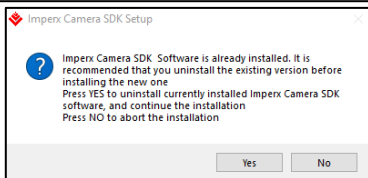
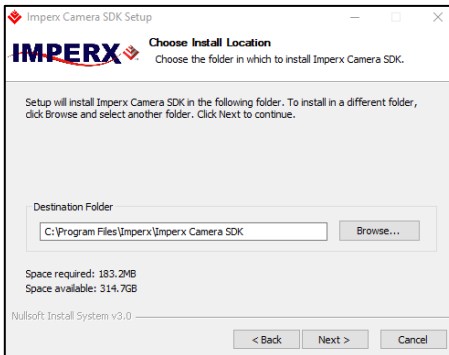
3.2. On the License Agreement screen, read the agreement and click **I Agree**.



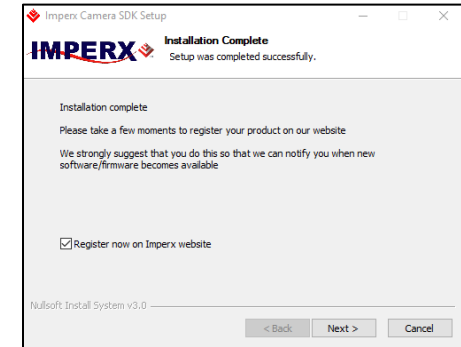
3.3. On the Choose Components screen, select all the Cheetah Camera SDK components and then click **Next**.



3.4. On the Choose Install Location screen, accept the default destination folder or click **Browse** and select a different location and then click **Next** and then **Install**. The installer prompts you to uninstall any existing versions of the software from your computer before continuing the installation.



3.5. On the Installation Complete screen, select the check box to register your software and then click **Next**. When the Imperx website appears, complete the Subscriber Registration and click **Submit**.

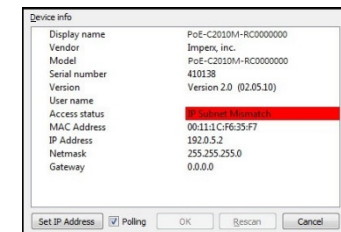


3.6. On the Completing Imperx Camera SDK Setup screen, select **Reboot now** and click **Finish**. The Imperx IPXPlayer icon appears on your desktop .



4. Troubleshooting IpxPlayer application

The first time you attempt to connect to the camera, you might need to set the IP address if IP Subnet Mismatch appears highlighted in red and the OK button is not available (on the Select Camera screen, see below).



To Set the IP Address:

- 4.1. Click **Set IP Address**, the Set IP Address screen appears. Click **OK**.
- 4.2. Click **OK** on the Select Camera screen.